

Technical Data

Categories No: TNPRGO

Name: High-Purity Graphene

Purity: >98wt%

layers: <3

Thickness: 1-3nm

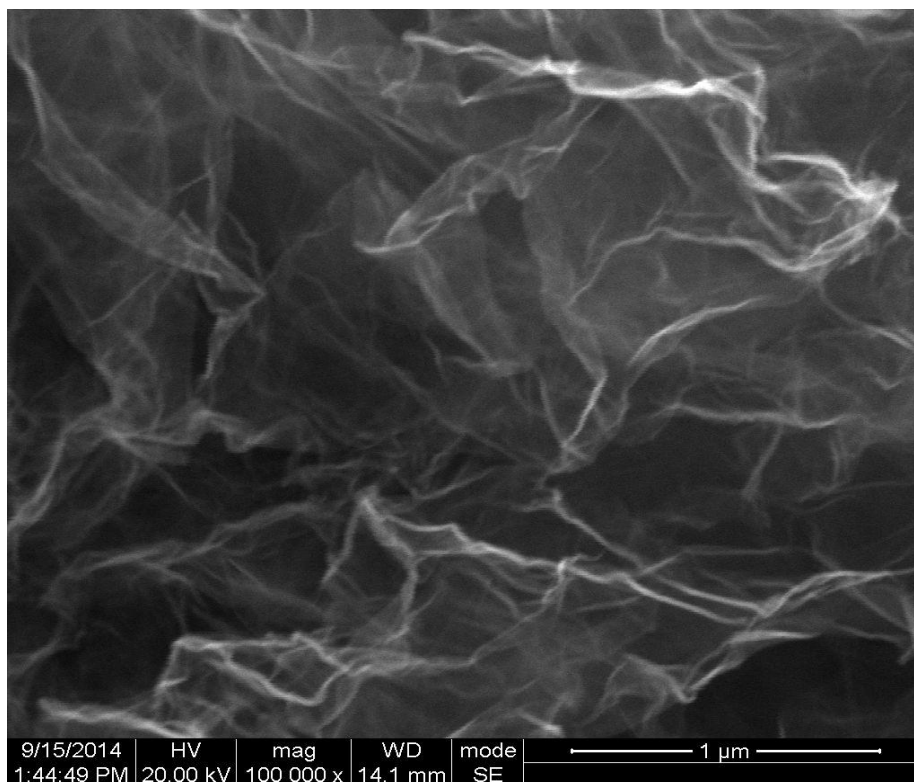
Scale: >50 μ m

Specific Surface Area: 100-200m²/g

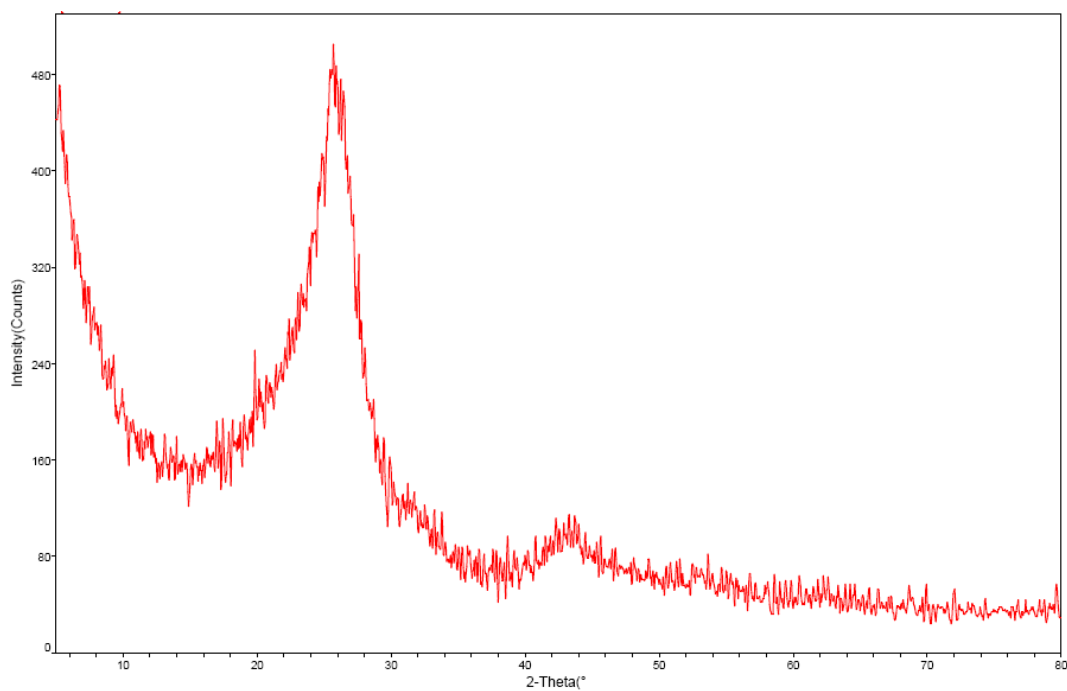
Electrical conductivity: EC=1000~1500 S/m

Tap density: 5~10 mg/mL

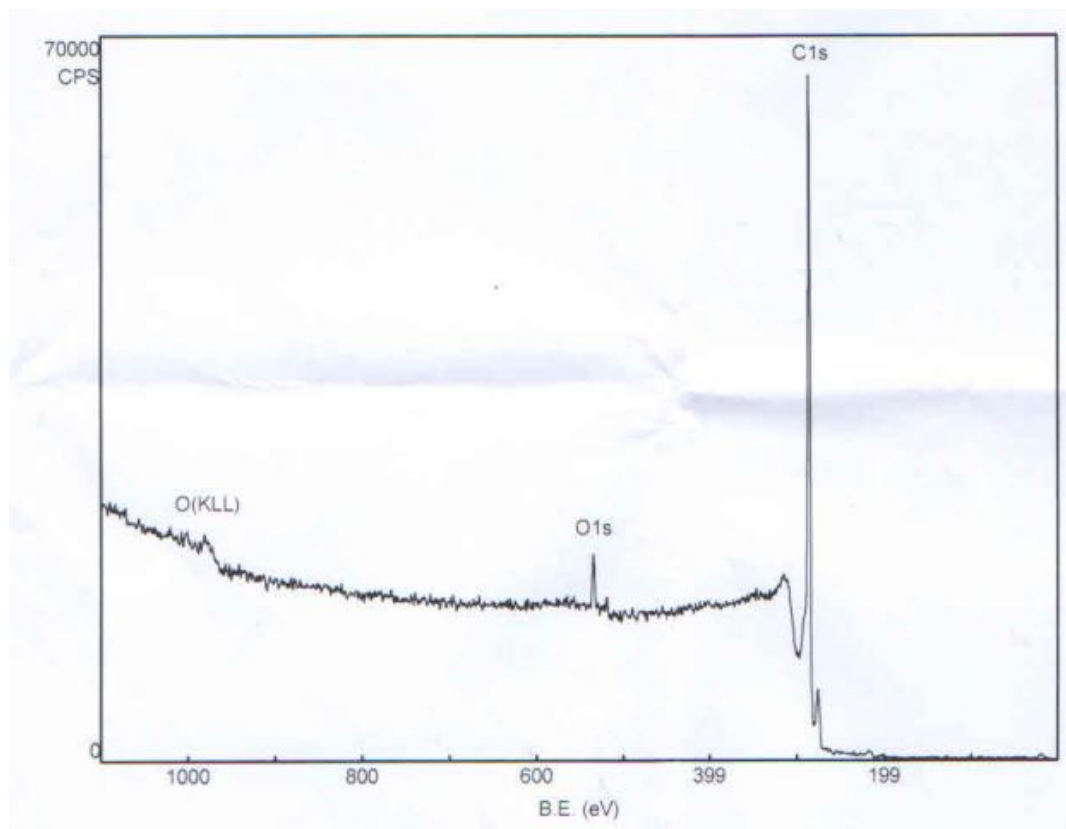
SEM of High Purity Graphene



XRD of High Purity Graphene



XPS



Components	Area(CPS)	Contents	Components
C	8300	0.25	96.48%
O	800	0.66	3.52%

Application instruction

Potential Applications of Carbon Nanotubes

Additives in polymers

Catalysts

Electron field emitters for cathode ray lighting elements

flat panel display

gas-discharge tubes in telecom networks

Electromagnetic-wave absorption and shielding

Energy conversion

Lithium-battery anodes

Hydrogen storage

Nanotube composites (by filling or coating);

Nanoprobes for STM, AFM, and EFM tips

nanolithography

nanoelectrodes

drug delivery

sensors

Reinforcements in composites

Supercapacitor